



Flight Plan & Site Survey

Created using **RPAS Wilco®**

Operation Name:	Northumberland Eledtric Aviators
Pilot Name:	██████████
Pilot Certificate:	██████████
Flight Start:	January 23, 2023 9:43 AM
Flight End:	January 23, 2023 11:43 AM
Flight Area (Latitude):	43° 59' 22.20" N (43.989)
Flight Area (Longitude):	78° 25' 43.50" W (-78.429)
Altitude - Radius:	Alt: 600 ft - Rad: 926.0 m (0.5 nm)
Airspace:	UNCONTROLLED
FIR - Contact:	CZYZ - 905-676-4509
Weather:	-1.4 Celsius - Partially cloudy

Please ensure you received all required authorizations prior to flight.

Disclaimer

This Site Survey was created using RPAS Wilco by AIM Robotics. The flight plan contained is intended only for RPAS flights on the date/time and location specified. The user accepts all responsibility for the accuracy and completeness of the information contained.

For the complete Terms & Conditions, see

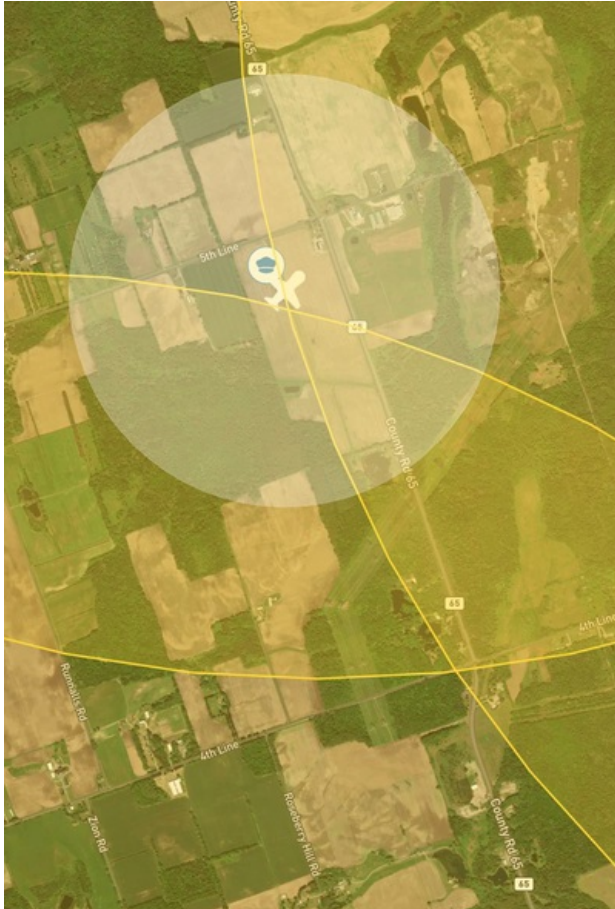
<https://rpaswilco.com/#/tnc>

Included



- Site Survey
- Obstacles (if available)
- Nearby Aerodromes
- Canadian Aviation Regulations
- GFA
- Aerodrome Supplements
 - METAR & TAF (if available)
- NOTAMs
- CFS



Flight Map



MAP Details

	Latitude	Longitude
 MODEL	43° 59' 22.20" N (43.989)	78° 25' 43.50" W (-78.429)
 Pilot	43° 59' 25.80" N (43.9905)	78° 25' 47.10" W (-78.4298)



Airspace Classification



Overlying Airspaces

Class	Name	Floor	Ceiling
E	Southern Ontario Low Level Control Area CAE	2500MSL	6500MSL
E	Southern Ontario Low Level Control Area CAE	6500MSL	12500MSL
B	Southern Ontario Low Level Control Area CAE	12500MSL	18000MSL
E	Toronto XPNDR MANDTRY	6500MSL	12500MSL
E	T781 Airway	2200AGL	12500MSL
B	T781 Airway	12500MSL	18000MSL
E	Peterborough, ON TA	700AGL	12500MSL
B	Peterborough, ON TA	12500MSL	18000MSL

Nearest Aerodromes & Distance from Operation

PORT HOPE (MILLSON FIELD) (CMF4	AERODROME	Reg)	Lat: 43.989	Long: 78.428	0.082 KM	0.04 NM
CANTON (CTN7	AERODROME	Reg)	Lat: 44.003	Long: 78.362	5.546 KM	2.99 NM
PORT HOPE (PETER'S FIELD) (CPH3	AERODROME	Reg)	Lat: 44.025	Long: 78.427	3.95 KM	2.13 NM
STEEVES FIELD (CNT9	AERODROME	Reg)	Lat: 43.94	Long: 78.445	5.656 KM	3.05 NM

Weather Information for Mission Day

Summary: Partly cloudy throughout the day.

Condition	Temperature	Feels Like	Precipitation	Visibility	Cloud Coverage	Wind Speed	Humidity
Partially cloudy	1.4 Celsius	5.5 Celsius	2.0 %	15.3 Km	78.1 %	30.2 kph	86.4 %

Canadian Aviation Regulations

Division III — General Operating and Flight Rules

For full listing please visit <https://laws-lois.justice.gc.ca/eng/regulations/SOR-96-433/FullText.html#s-901.27>

Visual Line-of-sight

- **901.11 (1)** Subject to subsection (2) no pilot shall operate a remotely piloted aircraft system unless the pilot or a visual observer has the aircraft in visual line-of-sight at all times during flight.
- **(2)** A pilot may operate a remotely piloted aircraft system without the pilot or a visual observer having the aircraft in visual line-of-sight if the operation is conducted in accordance with a special flight operations certificate — RPAS issued under section 903.03.

Procedures

- **901.23 (1)** No pilot shall operate a remotely piloted aircraft system unless the following procedures are established:
 - **(a)** normal operating procedures, including pre-flight, take-off, launch, approach, landing and recovery procedures; and
 - **(b)** emergency procedures, including with respect to
 - **(i)** a control station failure,
 - **(ii)** an equipment failure,
 - **(iii)** a failure of the remotely piloted aircraft,
 - **(iv)** a loss of the command and control link,
 - **(v)** a fly-away, and
 - **(vi)** flight termination.
- **(2)** If the manufacturer of the remotely piloted aircraft system provides instructions with respect to the topics referred to in paragraphs (1)(a) and (b), the procedures established under subsection (1) shall reflect those instructions.
- **(3)** No pilot shall conduct the take-off or launch of a remotely piloted aircraft unless the procedures referred to in subsection (1) are reviewed before the flight by, and are immediately available to, each crew member.
- **(4)** No pilot shall operate a remotely piloted aircraft system unless the operation is conducted in accordance with the procedures referred to in subsection (1).

Site Survey

901.27 No pilot shall operate a remotely piloted aircraft system unless, before commencing operations, they determine that the site for take-off, launch, landing or recovery is suitable for the proposed operation by conducting a site survey that takes into account the following factors:

- **(a)** the boundaries of the area of operation;
- **(b)** the type of airspace and the applicable regulatory requirements;
- **(c)** the altitudes and routes to be used on the approach to and departure from the area of operation;
- **(d)** the proximity of manned aircraft operations;
- **(e)** the proximity of aerodromes, airports and heliports;
- **(f)** the location and height of obstacles, including wires, masts, buildings, cell phone towers and wind turbines;
- **(g)** the predominant weather and environmental conditions for the area of operation; and
- **(h)** the horizontal distances from persons not involved in the operation.

Operations at or in the Vicinity of an Aerodrome, Airport or Heliport

- **901.47 (1)** No pilot shall operate a remotely piloted aircraft at or near an aerodrome that is listed in the *Canada Flight Supplement* or the *Water Aerodrome Supplement* in a manner that could interfere with an aircraft operating in the established traffic pattern.
- **(2)** Subject to section 901.73 no pilot shall operate a remotely piloted aircraft at a distance of less than
 - **(a)** three nautical miles from the centre of an airport; and
 - **(b)** one nautical mile from the centre of a heliport.
- **(3)** No pilot shall operate a remotely piloted aircraft at a distance of less than three nautical miles from the centre of an aerodrome operated under the authority of the Minister of National Defence unless the operation is conducted in accordance with a special flight operations certificate — RPAS issued under section 903.03.

Records

- **901.48 (1)** Every owner of a remotely piloted aircraft system shall keep the following records:
 - **(a)** a record containing the names of the pilots and other crew members who are involved in each flight and, in respect of the system, the time of each flight or series of flights and
 - **(b)** a record containing the particulars of any mandatory action and any other maintenance action, modification or repair performed on the system, including
 - **(i)** the names of the persons who performed them,
 - **(ii)** the dates they were undertaken,
 - **(iii)** in the case of a modification, the manufacturer, model and a description of the part or equipment installed to modify the system, and
 - **(iv)** if applicable any instructions provided to complete the work.
- **(2)** Every owner of a remotely piloted aircraft system shall ensure that the records referred to in subsection (1) are made available to the Minister on request and are retained for a period of
 - **(a)** in the case of the records referred to in paragraph (1)(a), 12 months after the day on which they are created; and
 - **(b)** in the case of the records referred to in paragraph (1)(b), 24 months after the day on which they are created.
- **(3)** Every owner of a remotely piloted aircraft system who transfers ownership of the system to another person shall, at the time of transfer, also deliver to that person all of the records referred to in paragraph (1)(b).

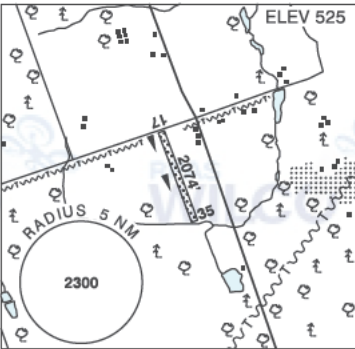
ONTARIO

AERODROME / FACILITY DIRECTORY

PORT HOPE (MILLSON FIELD) ON

CMF4

REF	N43 59 20 W78 25 42 5.4WNW 11°W (2016) UTC-5(4) Elev 525' A5000
OPR	Wayne Millson 905-373-6895 Reg PPR
PF	B-1 C-2,3,5 D-4,6
FLT PLN	LONDON 866-WXBRIEF (Toll free within Canada) or 866-541-4104 (Toll free within Canada & USA)
FIC	
RWY DATA	Rwy 17(171°)/35(351°) 2074x70 TURF
RCR	Opr No win maint
COMM	
ATF	tfc 123.2 5NM 3500 ASL
PRO	Remote control a/c club ac ivity located mid field, will give way to acft on apch. Acft training conducted in vic, monitor 126.7.
CAUTION	P-lines 1/2 mile S of Thld 35. Drainage ditch at Thld 35. Wildlife may be on rwy present dawn/dusk.



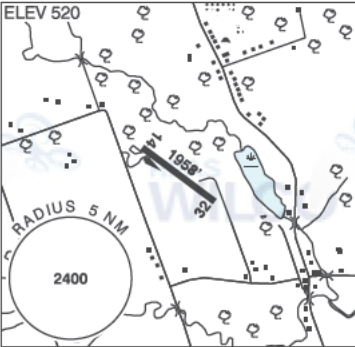
ONTARIO

AERODROME/FACILITY DIRECTORY

CANTON ON

CTN7

REF	N44 00 10 W78 21 43 Adj NW 11°W UTC-5(4) Elev 520' A5000
OPR	Ian W Angus 905-753-2549 or 289-251-2178 Reg PPR
PF	C-1,2,3,4,5,6
FLT PLN	FIC London 866-WXBRIEF (Toll Free within Canada) or 866-541-4104 (Toll free within Canada & USA)
RWY DATA	
RCR	Rwy 14(138°)/32(318°) 1958x40 ASPH Opr No win maint
LIGHTING	LO PN
COMM	ATF tfc 123.2 5NM 3600 ASL
CAUTION	
	Hydro lines parallel to hg and road.



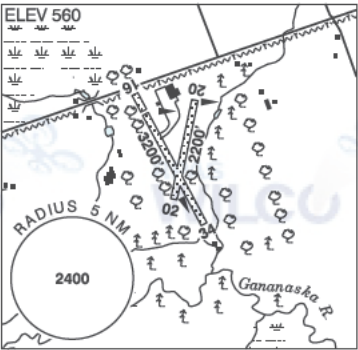
ONTARIO

AERODROME / FACILITY DIRECTORY

PORT HOPE (PETER'S FIELD) ON

CPH3

REF	N44 01 29 W78 25 37 6NW 11°W UTC-5(4) Elev 560' A5000
OPR	Spatial Concepts 416-602-6199 Reg PPR
PF	C-1,2,3,4,5 D-6
FLT PLN	FIC London 866-WXBRIEF (Toll free within Canada) or 866-541-4104 (Toll free within Canada & USA)
RWY DATA	
RCR	Rwy 16(163°)/34(343°) 3200x120 turf Thld 16 displ 450'
	Rwy 02(023°)/20(203°) 2200x120 turf Opr No win maint
COMM	ATF tfc 123.2 4NM 3600 ASL
CAUTION	



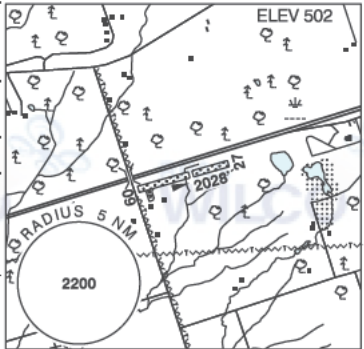
Trees 60 AGL 180' N Thld 16. Unlgt'd P-lines 35 AGL 110' N Thld 16. Treeline 30 AGL 70' W rwy centreline at Thld 16. Rwy 16 pronounced down slope aprx 1200' from thld for 500'. Trees 60 AGL 75' E of rwy intxn. Hi performance glider activity at A/D. Severe drop-off aprx 500' of Thld 34. Extv bird activity in vic of rwys. Acft at Thld 20 unable to see acft on final apch of Rwy 34/16.

ONTARIO

AERODROME/FACILITY DIRECTORY

NEWTONVILLE / STEEVES FIELD ON

CNT9

REF	N43 56 24 W78 26 42 2.1E 11°W (2017) UTC-5(4) Elev 502' A5000	
OPR	J & L LeGassie 416-998-6710 Reg PPR	
PF	B-1 C-2 D-3,4,5,6	
FLT PLN		
FIC	London 866-WXBRIEF (Toll free within Canada) or 866-541-4104 (Toll free within Canada & USA)	
RWY DATA	Rwy 09(085°)/27(265°) 2028x70 TURF Thld 27 displ 801'	
RCR	Opr No win maint. Rwy soft in spring.	
COMM		
ATF	tfc 123.2 5NM 3500 ASL	
CAUTION	Trees E of Thld 27. P-line aprx 0.3NM SSW of A/D.	